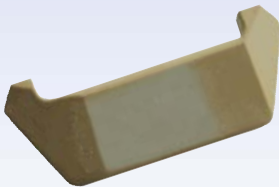
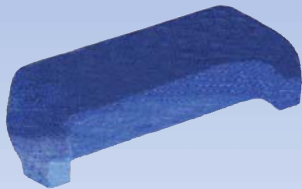


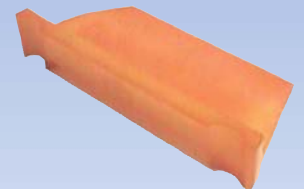


Pads & Insulator Configuration for Concrete & Steel Sleepers

Type	Clip	Insulator	57/	Pad	57/
F23 - F27 Series EF28 Series EF29 Series EF33 Series	PR401A or e1809	Orange (Nylon) for 110/113A rail	048424	5.5 mm Rubber (high speed) 5.5 mm EVA (low speed) 7.5 mm Pads for maintenance	048091 048521 048139
		Blue (GRN) for 109b/98lb rail	048027		
	e2001	White (GRN)	048436	N.B. (5.5 mm EVA Suitable for Series 400 steel sleepers at all speeds)	
F40 Sleepers	e1809	Blue (GRN)	048027	10.5 mm "H" Rubber	048028
EG49 - 113A	e2007	Red - Field side	048082	10.5 mm pad	048088
		Yellow - Gauge side	048081		
EG49 - CEN60	e2007	Green - Both sides	048060		



Description	Pads No. 57/
Insulators	
Insulator, Blue	048027
Insulator, Orange, for PR Clips	048424
Insulator, Orange, for SHC Clips	048422
Insulator, White	048436
Insulator, Green	048060
Insulator, Red	048082
Insulator, Yellow	048081
Insulator, Mills Toe Shoe	048220
Ferrules	
Ferrule, Polypropylene	048415
Ferrule, Nylon 66	048438



Prices available on request

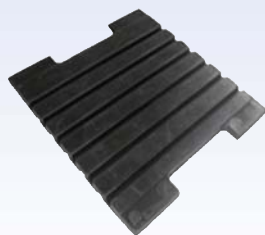
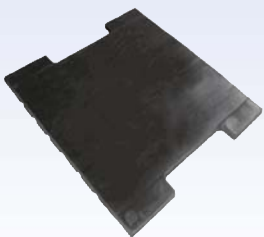


Direct Track Solutions Ltd

Suppliers of Rubber, EVA rail pads, GRN insulators, Nylon insulators and ferrules manufactured by Semperit Technische Produkte GmbH

Approved by Network Rail - Certificate No. PA05/01263, PA05/01932 & PA05/02222

Thickness (mm)	Material and Configuration	Pads No. 57/
H - Shaped Pads		
5.5	Rubber - Grooved	048091
5.5	EVA - Flat	048521
7.5	Rubber - Grooved	048139
10.5	Rubber - Grooved	048268
10.5	Rubber - Grooved	048028
10.5	Rubber - Grooved	048088
Other Non - Lipped Pads		
5.5	Rubber - Grooved	048092
Lipped Pads		
5.5	EVA - Flat, Lipped	048094
5.5	EVA - Flat, Lipped	048093
5.5	EVA - Flat, Lipped	048178
7.5	EVA - Flat, Lipped	048089
7.5	EVA - Flat, Lipped	048095
10.5	EVA - Flat, Lipped	048096



T: 01246 810198 F: 01246 570926

E: info@directtracksolutions.co.uk W: www.directtracksolutions.co.uk